



Features:

- Fast failure detecting of motor, electric fan, pump, air compressor, machine tools and so on
- Analysis of acceleration, velocity, and displacement
- Large memory of 100 readings and 10 frequency spectrograms
- hand-held accelerometer probe is available with a removable magnetic base for connecting with tested parts
- low battery indication
- Rechargeable battery
- large LCD display
- printer integrated, readings and vibration pattern can be printed out
- Upper and lower limit setting and sound alarm

Technical Specification

Testing range	Acceleration	0.1m/s ² -199.9 m/s ² (peak value)
	Velocity	0.01cm/s-19.99cm/s (virtual value)
	Displacement	0.001mm-1.999mm (peak to peak value)
Frequency range	Acceleration	10Hz-500Hz, 10Hz-1KHz, 10Hz-10KHz
	Velocity	10Hz-500Hz, 10Hz-1KHz
	Displacement	10Hz-500Hz
Power	Nickel-hydrogen battery	
Tolerance	± 5%	
Working temperature	0°C - 40°C	
Dimensions	270mm × 86mm × 47mm	
Weight	650g	

Standard Delivery

- Main unit 1
- Accelerometer probe 1
- Magnetic base 1
- Charger 1
- TIME certificate 1
- Instruction manual 1
- Warranty card 1

Optional Accessory

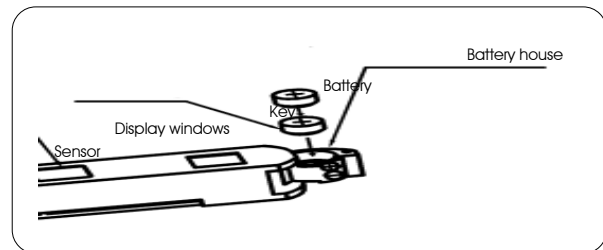
- Needle groupware
- Short needle

VIBRATION PEN TV200/220/260



Features:

- Used for fast failure detecting of motor, electric fan, pump, air compressor, machine tools and so on
- Compact size, small weight, easy handling
- Prompt testing of vibration on the workshop machines
- For quick checking of unbalance misalignment, bearings and gears
- Guard against mechanical malfunction
- Holding tested value for 40 seconds
- Automatic switch off after 40 seconds
- TV200 is used specially for velocity testing
- TV220 is used specially for displacement testing
- TV260 is used for testing of acceleration, velocity and displacement



Technical Specification

	TV200	TV220	TV260
Parameters	RMS of vibration velocity (mm/s)	Displacement	Acceleration, Velocity, Displacement
Testing range	Velocity: 0.1mm/s~199.9mm/s	Displacement: 0.01mm~1.999mm (peak~peak)	Acceleration: 0.01-199.9m/s ² (peak) Velocity: 0.01-199.9 mm/s(RMS) Displacement: 0.001-1.999 mm (peak-peak) Acceleration:10Hz~1kHz
Frequency range	Velocity:10Hz~1kHz	Displacement: 10Hz~500Hz	Velocity: 10Hz~1kHz Displacement: 10Hz ~ 500Hz
Tolerance	± 5%		
Display	3 1/2 digits LCD		
Power supply	two button batteries (LR44 or SR44)		
Battery capacity	Approx. 4.5 hours working continuously		
Operating Temperature	0°C ~40°C		
Humidity	< 85%		
Dimension	150mm × 22mm × 18mm		
DimensionWeight	55g (including batteries)		

Standard Delivery

- Main unit 1
- Battery 2
- Protection pocket 1
- TIME certificate 1
- Instruction manual 1
- Warranty card 1



Features:

- Advanced vibration tester with large measuring range
- Three display modes:
Special mode: displaying acceleration, velocity and displacement
Common mode: displaying one of acceleration, velocity and displacement
Spectrum mode: displaying vibration spectrum
- large memory up to 1550 readings and 25 spectrums
- Easy diagnosis: alarm is sounded when vibration go over limit set, and get into spectrum mode
- testing results and spectrum can be printed out with optional micro-printer
- can be connected with PC by special software for further analyses of vibration

Technical Specification

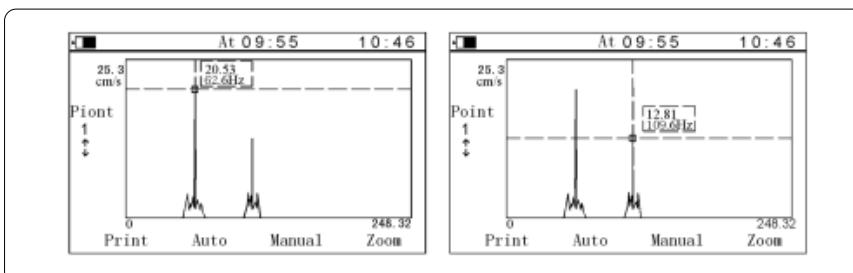
Testing range	Acceleration	0.1m/s ² -392m/s ² (peak value)
	Velocity	0.01cm/s-80cm/s (virtual value)
	Displacement	0.001mm-18.1mm (peak to peak value)
Frepency range	Acceleration	10Hz-200Hz, 10Hz-500Hz, 10Hz-1KHz, 10Hz-10KHz
	Velocity	10Hz-1KHz
	Displacement	10Hz -500Hz
Power	Li-ion rechargeable battery	
Display	LCD, 320 × 200 pixels with backlight	
Working temperature	0°C - 40°C	
Tolerance	± 5%	
Dimensions	171mm × 78.5mm × 28mm	
Weight	230g	

Standard Delivery

- Main unit 1
- Accelerometer probe 1
- Magnetic base 1
- Charger 1
- Protection Pocket 1
- TIME certificate 1
- Instruction manual 1
- Warranty card 1

Optional Accessory

- Needle groupware
- Long needle
- Printer TA230 (see page 47)
- Dataview software



VIBRATION TESTER TV300

Dataview for TV300

TV300 Data List				
Point	Time	Accelerate(g)	Velocity(cm/s)	Displace(mm)
1	2004-5-7 AM 09:34:50	184.8468	18.9249	1.0665
1	2004-5-12 AM 09:41:48	265.5558	27.3333	3.6444
1	2004-5-11 AM 09:41:18	278.7468	27.1948	2.9214
1	2004-5-10 AM 09:44:03	213.4925	22.9114	2.0829
1	2004-5-9 AM 09:01:16	173.1944	17.7222	1.6514
1	2004-5-8 AM 09:52:54	140.0274	13.3683	1.3684
1	2004-5-1 AM 09:38:42	78.4592	7.8237	0.7646
1	2004-5-6 AM 09:09:48	91.1111	9.7778	0.9889
1	2004-5-5 AM 09:38:44	81.6796	8.1677	0.8168
1	2004-5-4 AM 09:25:37	82.0285	7.4823	0.8209
1	2004-5-3 AM 09:37:39	74.0278	7.2222	0.7944
1	2004-5-2 AM 09:27:48	74.8971	7.4897	



Print [X]

Table

Scope

Current

All

Preview Print

Graph

Kind

Trend

FFT

Background Color

Print

Printer setup Close



Info Setup [X]

Point	Point Name	Name
1	Motor 1 radial	
2	Motor 1 horizontal	
3	Motor 1 vertical	
4	Motor 2 radial	
5	Motor 2 horizontal	
6	Motor 2 vertical	
7	Motor 3 radial	

Response:

Copy Info